

Apartament for long term rental next to Patalaca beach, Gran Canaria

1 500 €

Reference no.: 2155



Reference no.: 2155
Type: Studieleilighet
Location: Patalavaca
Complex: Patalavaca
Water & electricity: Inklusiv opp til 60 Euro per måned
Brutto area: 35 m²

About the property

Studio apartment on the ground level very close to the beach and shops. Beautiful sunset panorama the whole year long.

Key property facilities

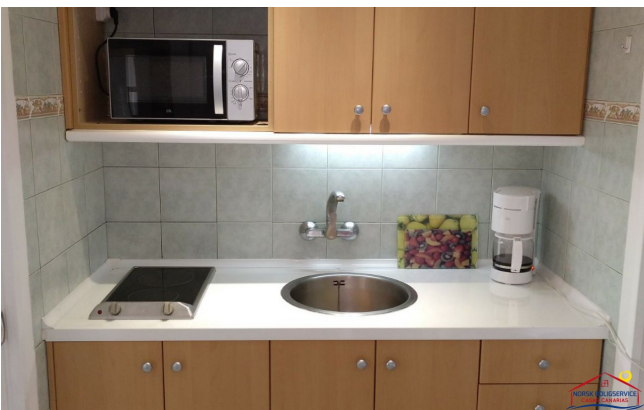
1 bathroom

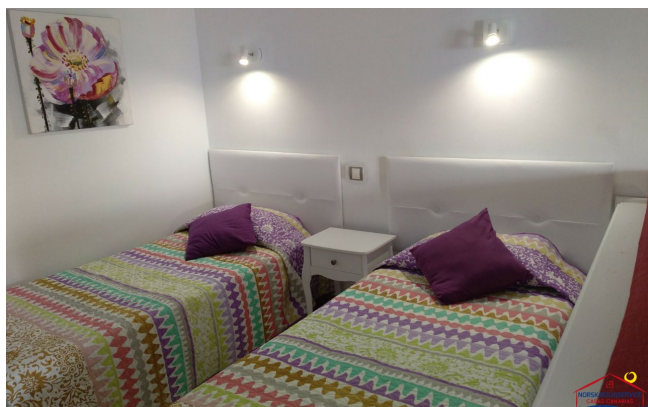
1 toilet

20 m from beach

Other facilities

- Seaview
- Terrace
- Internet
- Frontline
- Shower
- Elevator
- Furnished
- fi
- Renovated





Opening hours

Monday - Friday
10.00-16.00
Saturday 10.00 - 13.00

Phone contact

0034 928 185 004 (Spain)
047 925 65 860
(Norwegian mobile)

Office adress

Calle Ángel Guimerá,
1B
Las Palmas
35120 Arguineguin,
Gran Canaria

Web

www.canaria.no
www.norskboligservice.com

[Facebook](#)