

Project of 4 apartments , with parking places beautiful view over Arguineguin

580 000 €

Reference no.: 2807



Reference no.: 2807
Type: Tomt
Location: Arguineguin
Complex: Arguineguin

About the property

The project:

This modern project is located in the south of Gran Canaria, in the coastal village of Arguineguín. Its slight west orientation allows you to enjoy spectacular sunsets and one of the best climates in the world. Unbeatable views of the sea, hours of sunshine from morning to afternoon and the tranquility of the vacations. And the fact is that the area is away from the noise of traffic and the city, where both locals and foreign residents or occasional residents coexist.

In addition, the houses rise above the Altos de Arguineguín, not only offering an unparalleled panoramic view, but also counting on the impossibility of constructions that get in the way of it.

The location:

Its location in Arguineguín, a locality where demand prevails over supply, makes this real estate project a unique investment opportunity. The main indicator is the demographic growth of the area, which generates greater difficulty in finding housing. Thus, the project is

Key property facilities

100 m from beach

Other facilities

- Seaview
- Aircondition
- Shower
- Bath
- Garage
- Elevator

facing a high profit margin and assured profitability.

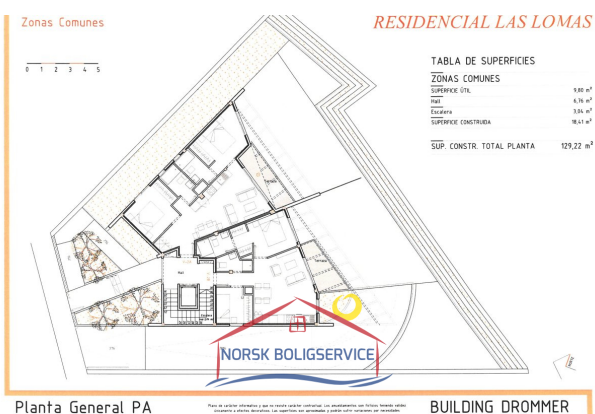
The objective:

The purpose is the creation of four sustainable and modern homes without losing in comfort and feeling of "HOME".

Home characteristics:

Common features include:

- High standing complex with four superior quality homes.
- Luminous homes in all rooms
- Two bedrooms (some with dressing room) all of them outward facing
- A living room-kitchen
- Two bathrooms
- Spacious terraces with sea views
- Parking space with storage room for storage of belongings
- Installation of solar panels
- The natural cross ventilation in all the houses, and the thermal insulation of walls and roof, guarantee thermal comfort and contribute to energy saving (together with the solar panels).
- All homes prepared with pre-installation for jacuzzi.
- Domotized homes
- EXTRA: Extra room of 50 m2 convertible into an extra apartment.



RESIDENCIAL LAS LOMAS

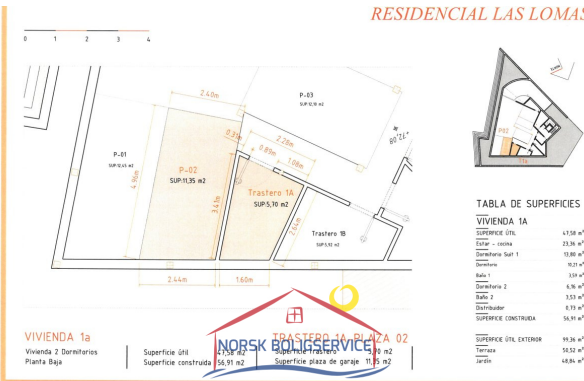


Tabla de Superficies

VIVIENDA 1A

SUPERFICIE ÚTIL	113,50 m ²
Estar - cocina	23,36 m ²
Dormitorio Sup 1	10,80 m ²
Dormitorio	10,20 m ²
Bañ 1	3,59 m ²
Dormitorio 2	6,36 m ²
Baño 2	3,35 m ²
Vestíbulo	6,73 m ²
SUPERFICIE CONSTRUIDA	154,91 m ²
SUPERFICIE ÚTIL EXTERIOR	18,36 m ²
Terraza	18,36 m ²
terraz.	18,36 m ²

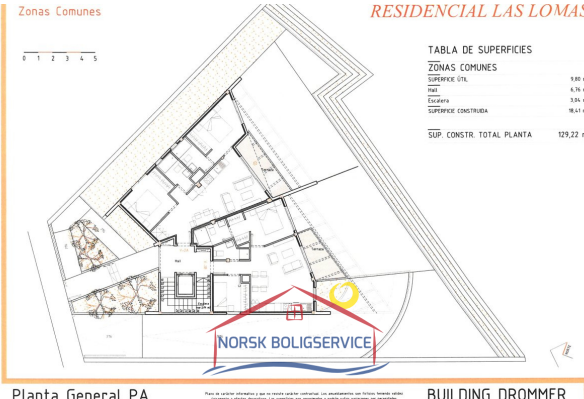
Tipologías Residenciales BUILDING DROMMER

Estar - cocina RESIDENCIAL LAS LOMAS



Tipologías Residenciales BUILDING DROMMER

Zonas Comunes RESIDENCIAL LAS LOMAS



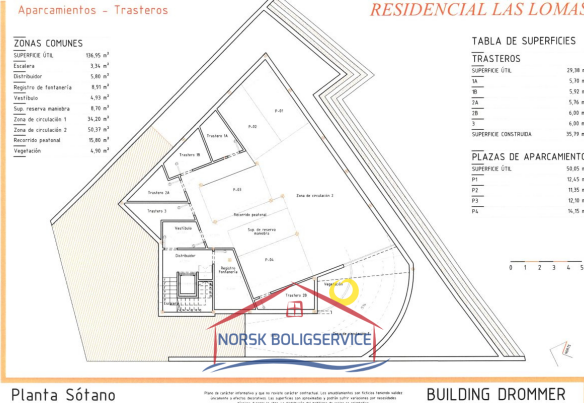
Planta General PA BUILDING DROMMER

Estar - cocina RESIDENCIAL LAS LOMAS



Tipologías Residenciales BUILDING DROMMER

Aparcamientos - Trasteros RESIDENCIAL LAS LOMAS



Planta Sótano BUILDING DROMMER

RESIDENCIAL LAS LOMAS

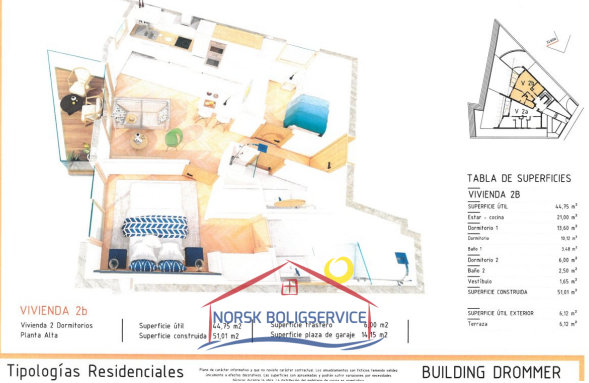


Tabla de Superficies

VIVIENDA 2B

SUPERFICIE ÚTIL	44,75 m ²
Estar - cocina	23,00 m ²
Dormitorio 1	10,00 m ²
Dormitorio	10,00 m ²
Bañ 1	3,48 m ²
Dormitorio 2	6,00 m ²
Baño 2	2,50 m ²
Vestíbulo	1,65 m ²
SUPERFICIE CONSTRUIDA	55,61 m ²
SUPERFICIE ÚTIL EXTERIOR	6,10 m ²
Terraza	6,10 m ²

Tipologías Residenciales BUILDING DROMMER



Opening hours

Monday - Friday
10.00-16.00
Saturday 10.00 - 13.00

Office adress

Calle Ángel Guimerá,
1B
Las Palmas
35120 Arguineguin,
Gran Canaria

Web

www.canaria.no
www.norskboligservice.com

Phone contact

0034 928 185 004 (Spain)
047 925 65 860
(Norwegian mobile)

Facebook