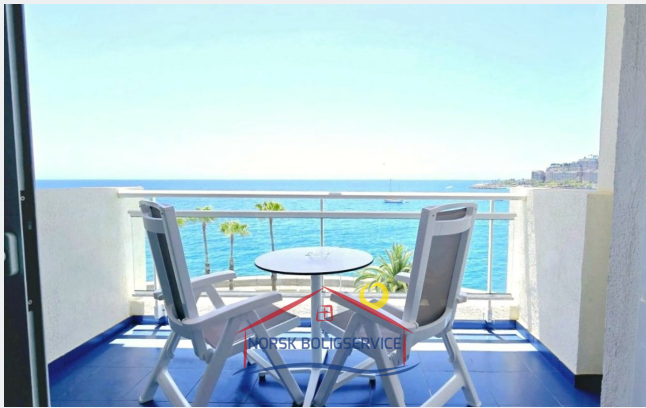


Apartment with beautiful sea views for rent in Patalavaca, Gran Canaria

1 500 €

Reference no.: 3010



Reference no.: 3010
Type: Leilighet
Location: Patalavaca
Complex: Patalavaca
Water & electricity: Inklusiv
Brutto area: 40 m²
Terrace areal: 8 m²

About the property

Apartment with beautiful sea views for rent in Patalavaca, Gran Canaria

The house:

It is a cosy flat with everything you need, **ideal for couples or individuals**. Bright, with sea views and in a quiet area.

Its **distribution** is as follows:

- **Large terrace / balcony.** It is the jewel of the house. It has a set of tables and chairs, which allows you to meet or have breakfast overlooking the sea and the beach of Anfi del Mar. From here, your home, you will be able to see dreamlike sunsets.
- **Living room & cosy and colourful kitchen.** It has all the essentials for cooking and a spacious dining table. This area connects to the front terrace, so views and natural light are assured.
- **Large double bedroom** with minimalist and modern decoration. It also has fitted wardrobes and ventilation through a small window.
- **Large bathroom with shower.**

Key property facilities

1 bedroom
1 bathroom
100 m from beach

Other facilities

- Seaview
- Terrace
- Internet
- Frontline
- Shower
- Swimming pool
- Elevator
- Furnished
- fi
- Renovated

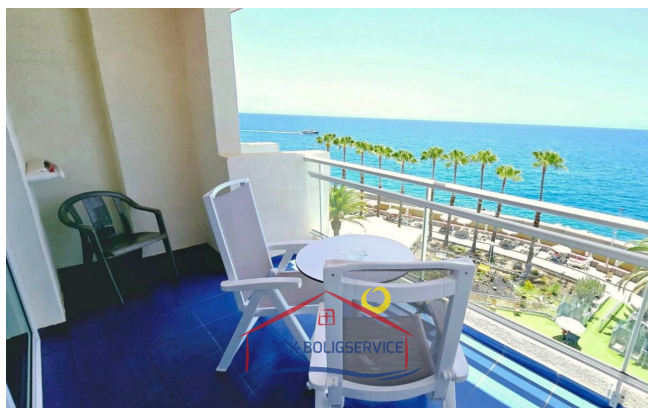
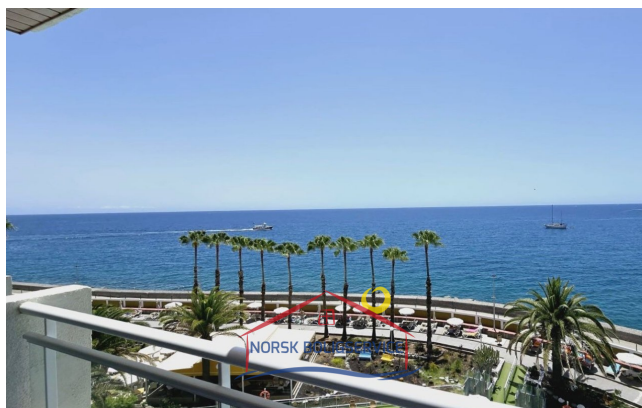
Its views are due to the fact that it is located on the seventh floor, which you don't have to worry about because the complex has a **lift**. In addition, the flat has a safe, an exclusive and direct connection to the internet with a direct telephone line without having to go through the switchboard.

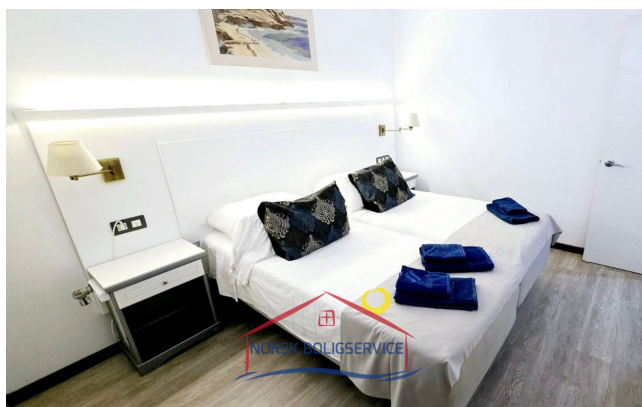
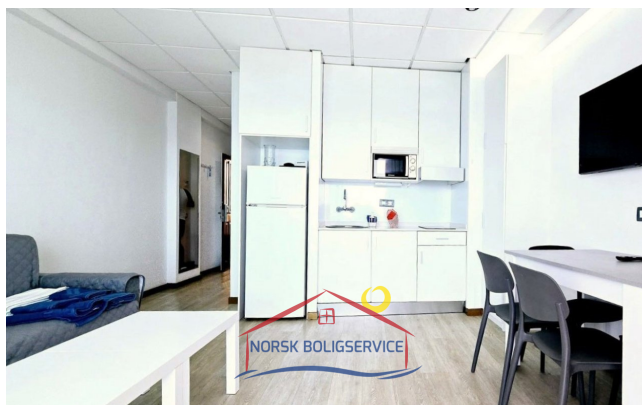
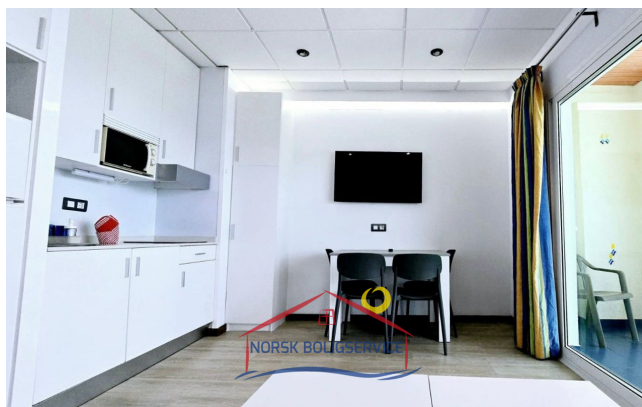
The area:

The property is located in **Patalavaca**, a quiet area in the south of the island where locals and foreigners live together. The **climate** is considered **one of the best in the world** and the beaches are known for their crystal clear water.

In addition to its paradisiacal areas and temperatures, it is a central area. Supermarkets and restaurants can be found nearby. Patalavaca beach is only a 5 minute walk away and **Anfi del Mar** is only a 4 minute drive away.

Patalavaca is a 6 minute drive from the village of **Arguineguín**, where you can enjoy **shopping and gastronomic areas**, as well as **supermarkets, pharmacies, schools, sports centres and a health centre**.





Opening hours

Monday - Friday
10.00-16.00
Saturday 10.00 - 13.00

Office address

Calle Ángel Guimerá,
1B
Las Palmas
35120 Arguineguin,
Gran Canaria

Web

www.canaria.no
www.norskboligservice.com

Facebook

Phone contact

0034 928 185 004 (Spain)

047 925 65 860

(Norwegian mobile)